

*Dedalic*

SOUND HAS NEVER BEEN  
SO BEAUTIFUL.

HIGH QUALITY AUDIO SYSTEMS

IMPRUNETA - FIRENZE - ITALIA



# SPEAKER SOSPESI

"L'elevazione del suono"

- INFINITE COMBINAZIONI DI COLORI  
*Endless combinations of colors*
- FISSAGGIO A PARETE, SOFFITTO  
O DA TERRA  
*Wall and ceiling fixing or from ground level*
- DIFFUSORE PASSIVO DA COLLEGARE  
AD UN SISTEMA DI AMPLIFICAZIONE  
*Passive speakers to be connected to an amplification system*
- ALTEZZA ED ORIENTAMENTO REGOLABILI  
*Adjustable height and orientation*
- BASS REFLEX  
*Bass reflex*

## SCHEDA TECNICA

DATA SHEET

**Frequenza** (Frequency): 55Hz-16.000 Hz(+/-3dB)

**Sensibilità** (Sensitivity): 90.0dB/2.83V/1m

**Impedenza nom.** (Nom. Impedence): 8 Ohm (min 6 Ohm)  
100 V (on demand)

**Potenza Massima** (Power Max): 60 W

**Dimensioni** (Dimensions):

- Wall/Cieling: 32x30x30 cm
- Floor: 70x52x230 cm

Lunghezza cavo personalizzabile (Customizable cable lenght)

**Peso** (Weight):

- Wall/Cieling: 8.5 Kg
- Floor: 40 Kg

**Tipologia** (Type): passivo (passive)

HI-FI stereo (◉) ↔



OLIVIA  
WALL



OLIVIA  
CEILING



OLIVIA  
FLOOR





# SPEAKER DA PARETE

"La libertà del suono"

## ATHENA 26/32 OLYMPIA OUTDOOR

### SCHEDA TECNICA

DATA SHEET

**Frequenza (Frequency):** 55Hz-16.000 Hz(+/-3dB)

**Sensibilità (Sensitivity):** 90.0dB/2.83V/1m

**Impedenza nom. (Nom. Impedence):** 8 Ohm (min 6 Ohm)  
100 V (on demand)

**Potenza Massima (Power Max):** 60 W

**Dimensioni (Dimensions):**

- Athena 32/Olympia: 32x40x36 cm
- Athena 26: 26x30x28 cm

**Peso (Weight):** 8.5 Kg

**Tipologia (Type):** passivo (passive)

**HI-FI** stereo (◉) ↔



# SUBWOOFER

"Potenza pura"

## TAUROS

### SCHEDA TECNICA

DATA SHEET

**Frequenza (Frequency):** 65Hz-5.000 Hz(+/-3dB)

**Sensibilità (Sensitivity):** 91.0dB/2.83V/1m

**Impedenza nom. (Nom. Impedence):** 8 Ohm (min 6 Ohm)  
100 V (on demand)

**Potenza Massima (Power Max):** 300 W

**Dimensioni (Dimensions):** 32x32x36 cm

**Peso (Weight):** 8.5 Kg

**Tipologia\* (Type):** passivo (passive)

SUPER BASS WATER RESISTANT



\*Accoppiabile a tutti i modelli di speaker a parte modelli a torre e modelli di tipologia "attiva".  
Can be paired with all speaker models except tower and 'active' models.



# SPEAKER DA TERRA E SCAFFALE

"Il suono dalle linee essenziali"

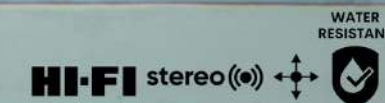
- INFINITE COMBINAZIONI DI COLORI  
*Endless combinations of colors*
- DIFFUSORE PASSIVO DA COLLEGARE AD UN SISTEMA DI AMPLIFICAZIONE  
*Passive speakers to be connected to an amplification system*
- BASS RELFEX  
*Bass reflex*

## TALETIAS LOW OUTDOOR

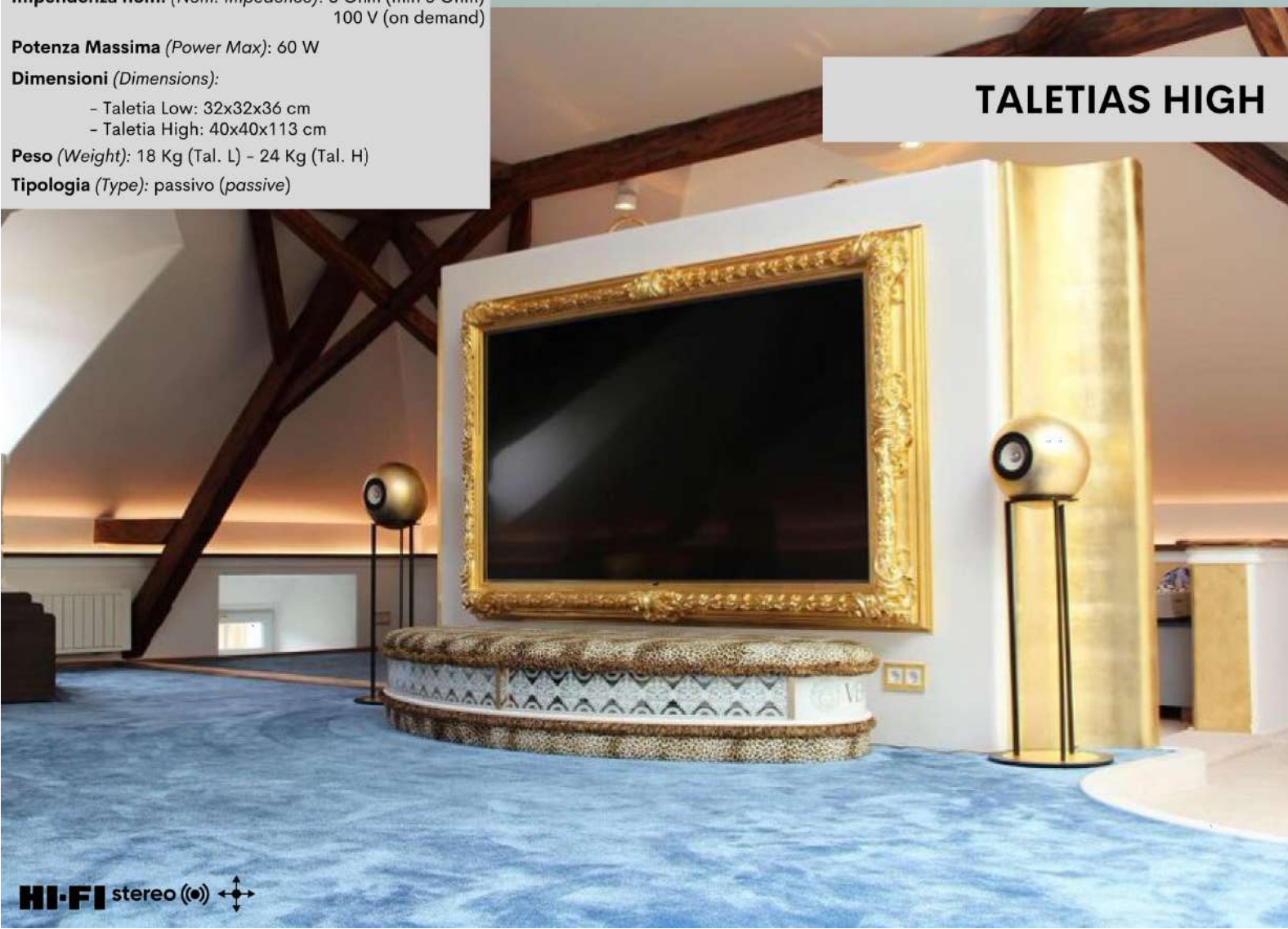


### SCHEMA TECNICA DATA SHEET

**Frequenza (Frequency):** 55Hz-16.000 Hz(+/-3dB)  
**Sensibilità (Sensitivity):** 90.0dB/2.83V/1m  
**Impedenza nom. (Nom. Impedance):** 8 Ohm (min 6 Ohm)  
100 V (on demand)  
**Potenza Massima (Power Max):** 60 W  
**Dimensioni (Dimensions):**  
- Taletia Low: 32x32x36 cm  
- Taletia High: 40x40x113 cm  
**Peso (Weight):** 18 Kg (Tal. L) - 24 Kg (Tal. H)  
**Tipologia (Type):** passivo (passive)



## TALETIAS HIGH

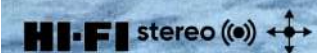


### SCHEMA TECNICA DATA SHEET

**Frequenza (Frequency):** 60Hz-20.000 Hz(+/-3dB)  
**Sensibilità (Sensitivity):** 90.0dB/2.83V/1m  
**Impedenza nom. (Nom. Impedance):** 8 Ohm (min 6 Ohm)  
100 V (on demand)  
**Potenza Massima (Power Max):** 50 W  
**Dimensioni (Dimensions):** 26x26x27 cm  
**Peso (Weight):** 6 Kg  
**Tipologia (Type):** passivo (passive)



## ANTHEA







**EUCLIDIA LOW**



**EUCLIDIA HIGH**

# SPEAKER A TORRE

*"Eleganza e potenza"*



**TOLOMEA**



## SCHEDA TECNICA

*DATA SHEET*

**Frequenza (Frequency):** 35Hz-20.000 Hz(+/-3dB)

**Sensibilità (Sensitivity):** 87.0dB/2.83V/1m

**Impedenza nom. (Nom. Impedence):** 8 Ohm (min 6 Ohm)  
100 V (on demand)

**Potenza Massima (Power Max):** 180W

**Dimensioni (Dimensions):**

- Tolomea: 61x49x125 cm
- Geminea: 54x49x120 cm

**Peso (Weight):** 55 Kg

**Tipologia (Type):** passivo (*passive*)

- INFINITE COMBINAZIONI DI COLORI  
*Endless combinations of colors*

- DIFFUSORE PASSIVO DA COLLEGARE  
AD UN SISTEMA DI AMPLIFICAZIONE  
*Passive speakers to be connected to an amplification system*

SUPER BASS

**HI-FI** stereo (◉) 



**GEMINEA**



# SPEAKER SMART

"Il suono che non ti aspetti"

**GEA**  
**PANGEA** OUTDOOR

- INFINITE COMBINAZIONI DI COLORI  
*Endless combinations of colors*
- PLUG AND PLAY  
*Plug and Play*
- CONNETTIVITA' WIFI, BLUETOOTH, ETHERNET, AUX  
*WiFi, Bluetooth, Ethernet, Aux connectivity*
- MULTIROOM  
(ascolta musica in diversi ambienti)  
*Multiroom: Listen to music in different spaces*
- APP ANDROID E IOS  
*Android and IOS apps*
- SUONO OMNIDIREZIONALE  
*Omnidirectional sound*
- DISPONIBILE VERSIONE OUTDOOR  
*Outdoor version available*
- BASE CON ILLUMINAZIONE  
*Base with ambient light*



## SCHEDA TECNICA

DATA SHEET

**Frequenza (Frequency):** 52Hz-21.000 Hz(+/-3dB)

**Sensibilità (Sensitivity):** 89.0dB/2.83V/1m

**Impedenza nom. (Nom. Impedence):** 8 Ohm  
100 V (on demand)

**Potenza Massima (Power Max):** 300 W

**Dimensioni (Dimensions):** 42 x 42 x 60cm

**Peso (Weight):** 15 Kg

**Tipologia (Type):** Attivo Gea(act.) Passivo Pangea (pass.)

WATER  
RESISTANT



# SPEAKER PORTATILE

"Il suono ovunque"



- INFINITE COMBINAZIONI DI COLORI  
*Endless combinations of colors*
- PLUG AND PLAY  
*Plug and Play*
- CONNETTIVITA' BLUETOOTH  
*Bluetooth connectivity*
- WATER RESISTANT  
*Water Resistant*
- SUONO OMNIDIREZIONALE  
*Omnidirectional sound*
- BATTERIA A LUNGA DURATA  
*Long life battery*
- NON NECESSITA DI APP  
*No App needed*

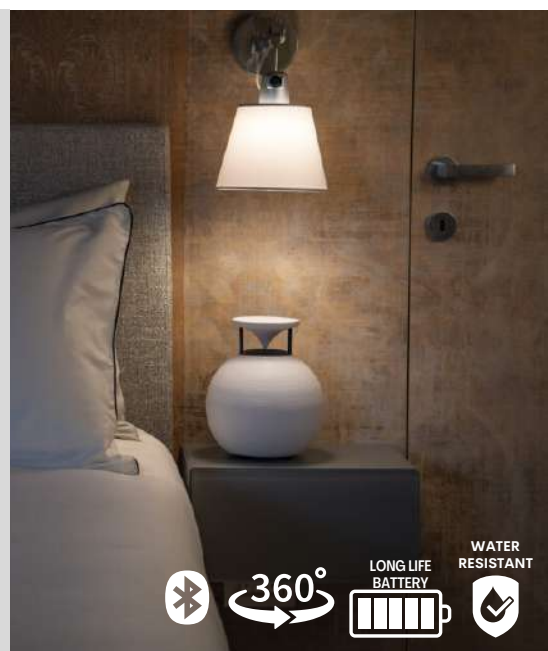
## SCHEDA TECNICA

DATA SHEET

**Potenza Massima (Power Max):** 60 W

**Dimensioni (Dimensions):** 21x21x23 cm

**Peso (Weight):** 2.8 Kg



WATER  
RESISTANT



# FINITURE PARTI IN METALLO E TERRACOTTA

Terracotta and metal parts finishes

RAL 1000	RAL 1001	RAL 1002	RAL 1003	RAL 1004	RAL 1005	RAL 4001	RAL 4002	RAL 4003	RAL 4004	RAL 4005	RAL 4006	RAL 7000	RAL 7001	RAL 7002	RAL 7003	RAL 7004	RAL 7005
RAL 1006	RAL 1007	RAL 1011	RAL 1012	RAL 1013	RAL 1014	RAL 4007	RAL 4008	RAL 4009	RAL 4010	RAL 4011	RAL 4012	RAL 7006	RAL 7008	RAL 7009	RAL 7010	RAL 7011	RAL 7012
RAL 1015	RAL 1016	RAL 1017	RAL 1018	RAL 1019	RAL 1020	RAL 5000	RAL 5001	RAL 5002	RAL 5003	RAL 5004	RAL 5005	RAL 7013	RAL 7015	RAL 7016	RAL 7021	RAL 7022	RAL 7023
RAL 1021	RAL 1023	RAL 1024	RAL 1026	RAL 1027	RAL 1028	RAL 5007	RAL 5008	RAL 5009	RAL 5010	RAL 5011	RAL 5012	RAL 7024	RAL 7026	RAL 7030	RAL 7031	RAL 7032	RAL 7033
RAL 1032	RAL 1033	RAL 1034	RAL 1035	RAL 1036	RAL 1037	RAL 5013	RAL 5014	RAL 5015	RAL 5017	RAL 5018	RAL 5019	RAL 7034	RAL 7035	RAL 7036	RAL 7037	RAL 7038	RAL 7039
RAL 2000	RAL 2001	RAL 2002	RAL 2003	RAL 2004	RAL 2005	RAL 6020	RAL 6021	RAL 6022	RAL 6023	RAL 6024	RAL 6025	RAL 7040	RAL 7042	RAL 7043	RAL 7044	RAL 7045	RAL 7046
RAL 2007	RAL 2008	RAL 2009	RAL 2010	RAL 2011	RAL 2012	RAL 6000	RAL 6001	RAL 6002	RAL 6003	RAL 6004	RAL 6005	RAL 7047	RAL 7048				
RAL 2013						RAL 6006	RAL 6007	RAL 6008	RAL 6009	RAL 6010	RAL 6011	RAL 8000	RAL 8001	RAL 8002	RAL 8003	RAL 8004	RAL 8007
RAL 3000	RAL 3001	RAL 3002	RAL 3003	RAL 3004	RAL 3005	RAL 6012	RAL 6013	RAL 6014	RAL 6015	RAL 6016	RAL 6017	RAL 8005	RAL 8011	RAL 8012	RAL 8014	RAL 8015	RAL 8016
RAL 3007	RAL 3009	RAL 3011	RAL 3012	RAL 3013	RAL 3014	RAL 6018	RAL 6019	RAL 6020	RAL 6021	RAL 6022	RAL 6024	RAL 8017	RAL 8019	RAL 8022	RAL 8023	RAL 8024	RAL 8025
RAL 3015	RAL 3016	RAL 3017	RAL 3018	RAL 3020	RAL 3022	RAL 6025	RAL 6026	RAL 6027	RAL 6028	RAL 6029	RAL 6032	RAL 8028	RAL 8029				
RAL 3024	RAL 3026	RAL 3027	RAL 3028	RAL 3031	RAL 3032	RAL 6033	RAL 6034	RAL 6035	RAL 6036	RAL 6037	RAL 6038	RAL 9001	RAL 9002	RAL 9003	RAL 9004	RAL 9005	RAL 9006

Disponibili in versione pastello, metallizzato, opaco e lucido  
Available in pastel, metallic, matt and gloss versions

## FINITURE SPECIALI

Special finishes

### Parti in terracotta Terracotta parts

COD. 1800

Terracotta naturale  
Natural Terracotta



COD. 1801

Terracotta marrone  
Brown Terracotta



COD. 1804

Smaltatura magima  
Magma ceramic glaze



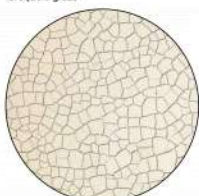
COD. 1805

Smaltatura iridescente  
Iridescent glaze



COD. 1806

Smaltatura effetto craquelé  
Craquelé glaze



COD. 1807

Cromatura  
Chrome plating



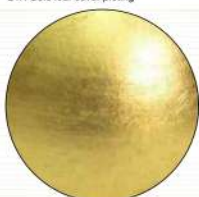
COD. 1808

Placcatura in foglia d'argento  
Silver leaf cover plating



COD. 1809

Placcatura in foglia d'oro 24K  
24K Gold leaf cover plating



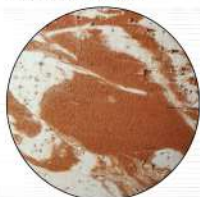
COD. 1810

Placcatura in foglia rame  
Copper leaf cover plating



COD. 1811

Amalgama di argilla bianca e rossa  
Mixture of white and red clay



COD. 1812

Amalgama di argilla bianca e marrone  
Mixture of white and brown clay



COD. 1813

Smaltatura effetto anfora  
Amphora glaze



### Parti in metallo Metal parts

COD. 1901

Cromatura  
Chrome plating



COD. 1902

Bronzo lucidato  
Polished bronze



COD. 1903

Bronzo brunito  
Burnished bronze



COD. 1904

Rame lucidato  
Polished copper



COD. 1905

Rame brunito  
Burnished copper



COD. 1906

Corlen  
Corlen



COD. 1909

Placcatura in foglia argento  
Silver leaf cover plating



COD. 1910

Placcatura in foglia oro 24K  
24K Gold leaf cover plating



COD. 1911

Placcatura in foglia rame  
Copper leaf cover plating



QR CODE

CONTATTI (CONTACT)

tel: +39 3315490706

mail: sales@dedalica.com

site: www.dedalica.com



DedalicaArtInTechnology



dedalica\_art\_in\_technology



Dedalica

Dedalica

IMPRUNETA - FIRENZE - ITALIA